

# MONTHLY MEMBERSHIP PROGRESS REPORT

LOCATION VIRGINIA

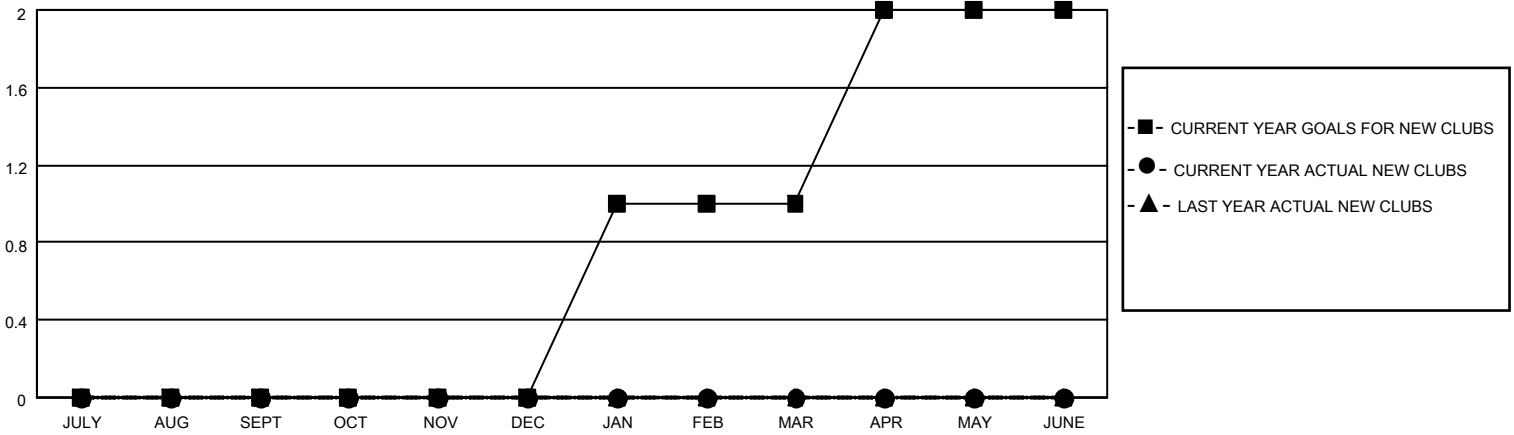
District 24 C

Results as of: 5/31/2023

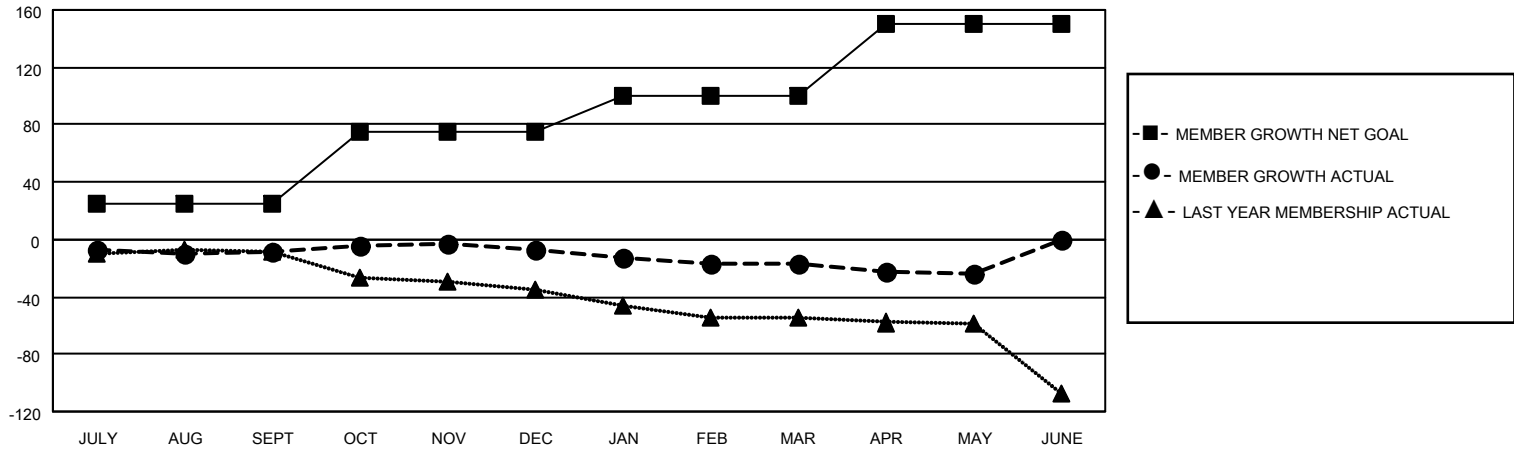
Clubs			
RESULTS FOR 2022-2023			
QUARTER	NEW CLUB GOAL	NEW CLUBS	DROPPED CLUBS
JULY/AUG/SEPT	0	0	0
OCT/NOV/DEC	0	0	1
JAN/FEB/MAR	1	0	0
APR/MAY/JUNE	1	0	1

Members			
RESULTS FOR 2022-2023			
QUARTER	MEMBER GROWTH NET GOAL	MEMBER GROWTH ACTUAL	DROPPED MEMBERS ACTUAL (including transfers)
JULY/AUG/SEPT	25	29	33
OCT/NOV/DEC	50	24	23
JAN/FEB/MAR	25	35	40
APR/MAY/JUNE	50	28	30

**GOALS AND ACTUAL NEW CLUBS CUMULATIVE**



**GOALS AND ACTUAL MEMBERS CUMULATIVE**



DROPPED CLUBS: 2	
<u>DROPPED MEMBERS</u>	
DECEASED	30
CLUB CANCELLED	2
OTHER	94
<b>TOTAL</b>	<b>126</b>

36 CLUBS OF 56 ADDED 1 OR MORE NEW MEMBERS

[CLICK HERE FOR CUMULATIVE MEMBERSHIP DATA](#)

<u>GENDER DISTRIBUTION</u>	
MALE	814 (64.25%)
FEMALE	453 (35.75%)
NON BINARY	0 (0.00%)
PREFER NOT TO ANSWER	0 (0.00%)
<b>TOTAL FAMILY UNIT MEMBERS</b>	<b>227</b>
<b>FAMILY MEMBERS PAYING HALF DUES</b>	<b>114</b>